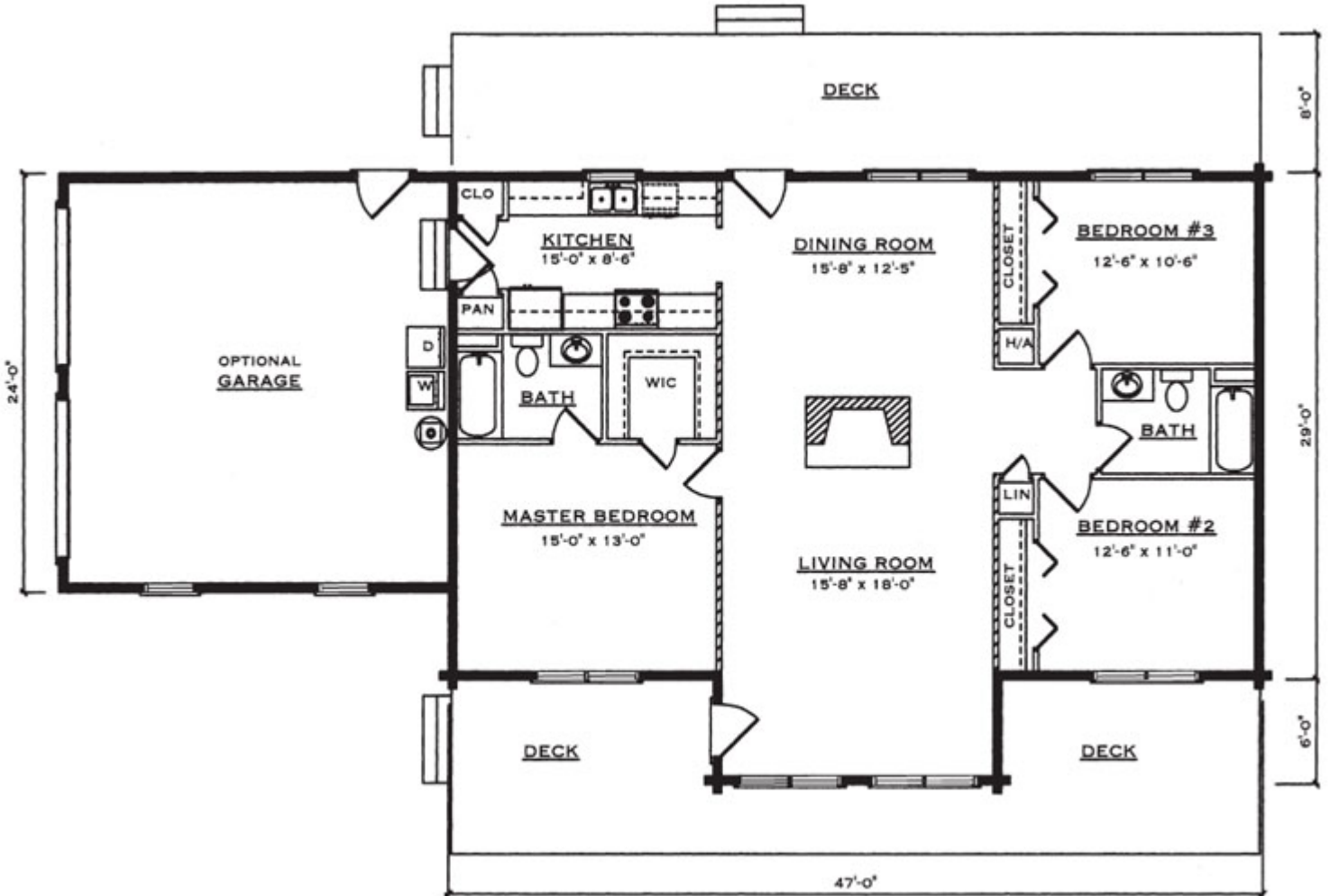




# Kingston

| Square Footage (Living Space) |       |
|-------------------------------|-------|
| First Floor                   | 1,463 |
| Number of Beds / Baths        | 3 / 2 |
| Total                         | 1,463 |



Drawings are artist renderings for sales purpose only. Obtain construction drawings for actual dimensions.  
COPYRIGHT, Daniel Boone Log Homes (DBLH). Any reproduction or reuse of this drawing without the express written consent of DBLH is prohibited and unlawful.